

For Lease



ROYAL  
CANADIAN  
PROPERTIES



10 - 1530 REGENT AVE WEST

Winnipeg, MB

Contact:

Craig Stoddart  
(204) 947-2835

Retail - Office - Industrial

[www.royalcan.com](http://www.royalcan.com)

# Overview | 10-1530 REGENT AVE. WEST



## Description

Located at Regent and Rougeau across from Kildonan Place Shopping Centre

Address: 10 - 1530 Regent Ave. West

Zoning: C3

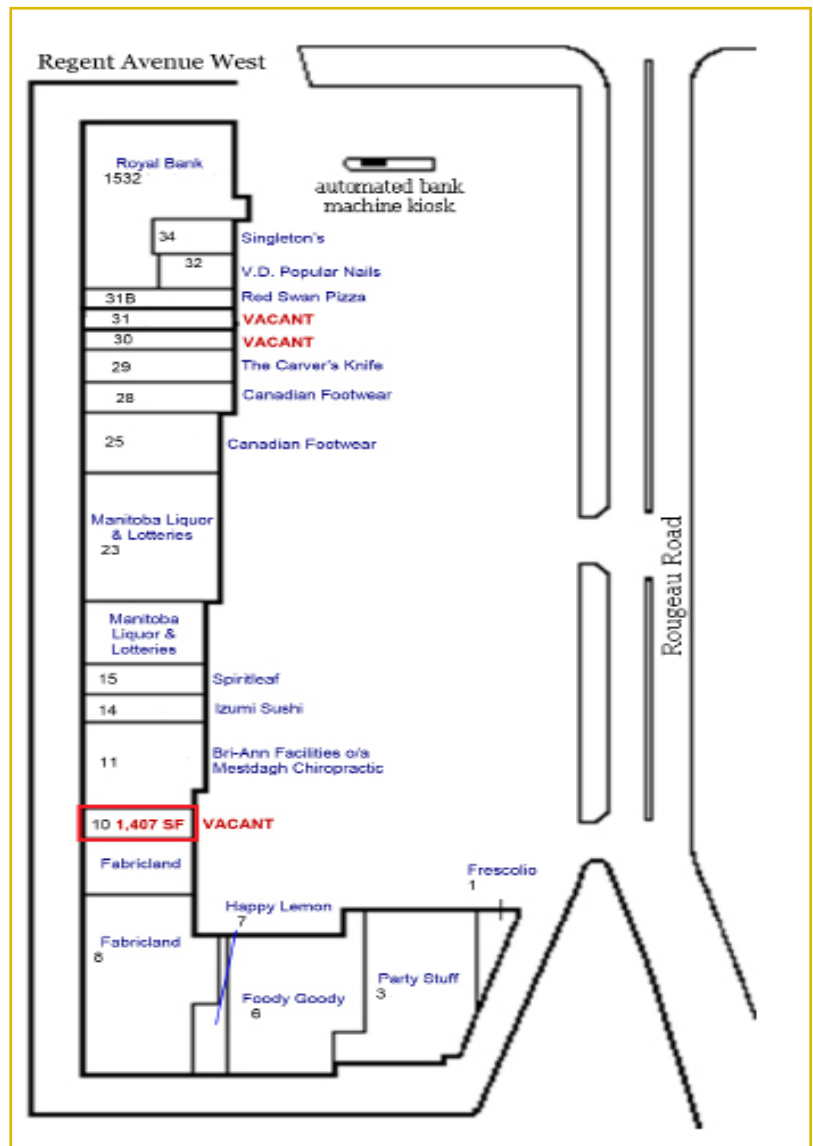
Rentable Area: 1,407 sq. ft.

Net Rent: \$25.00 /sf/annum

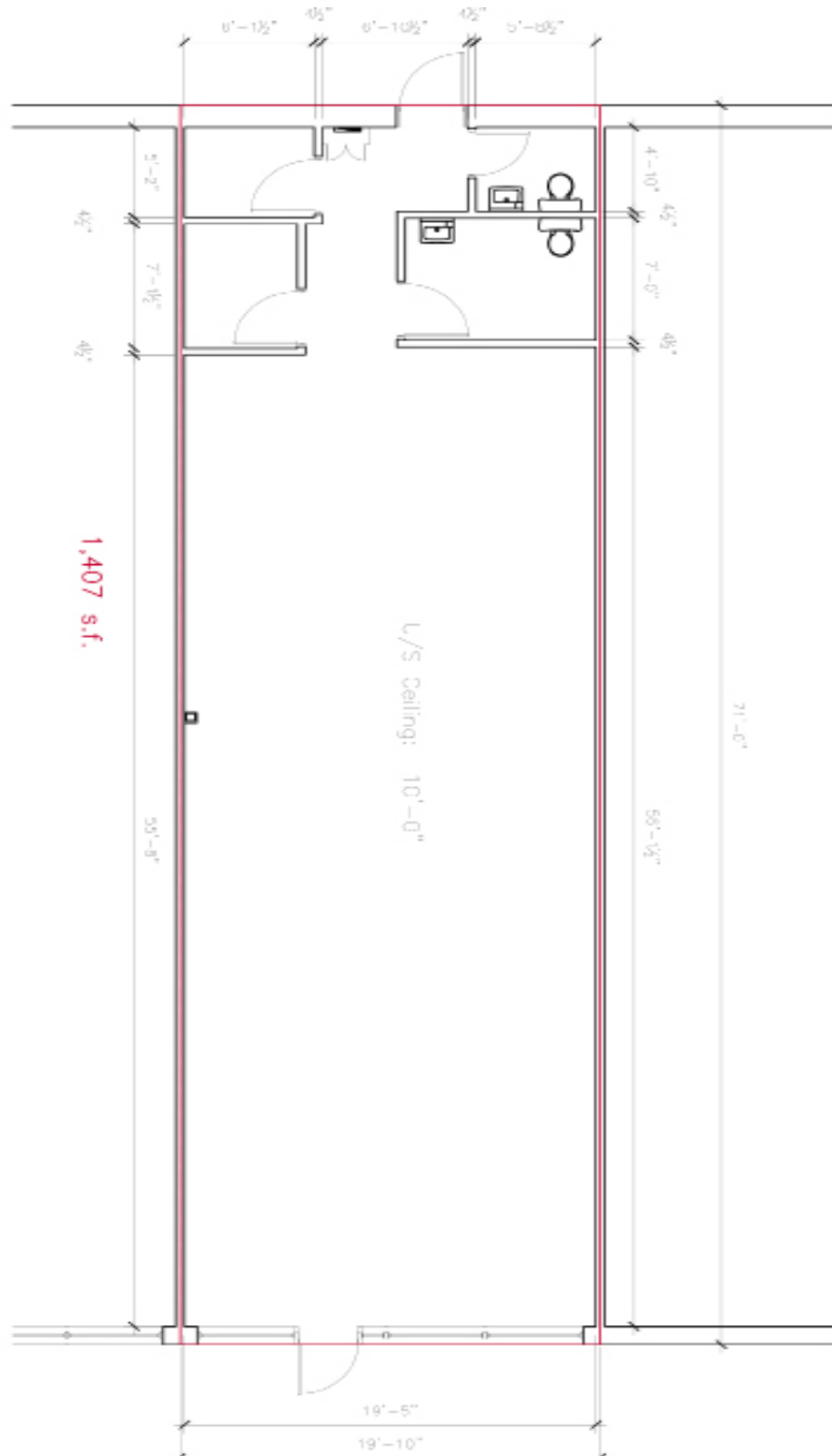
CAM/Tax: \$10.11 (est 2024) + Mgmt. Fee

## Site Highlights

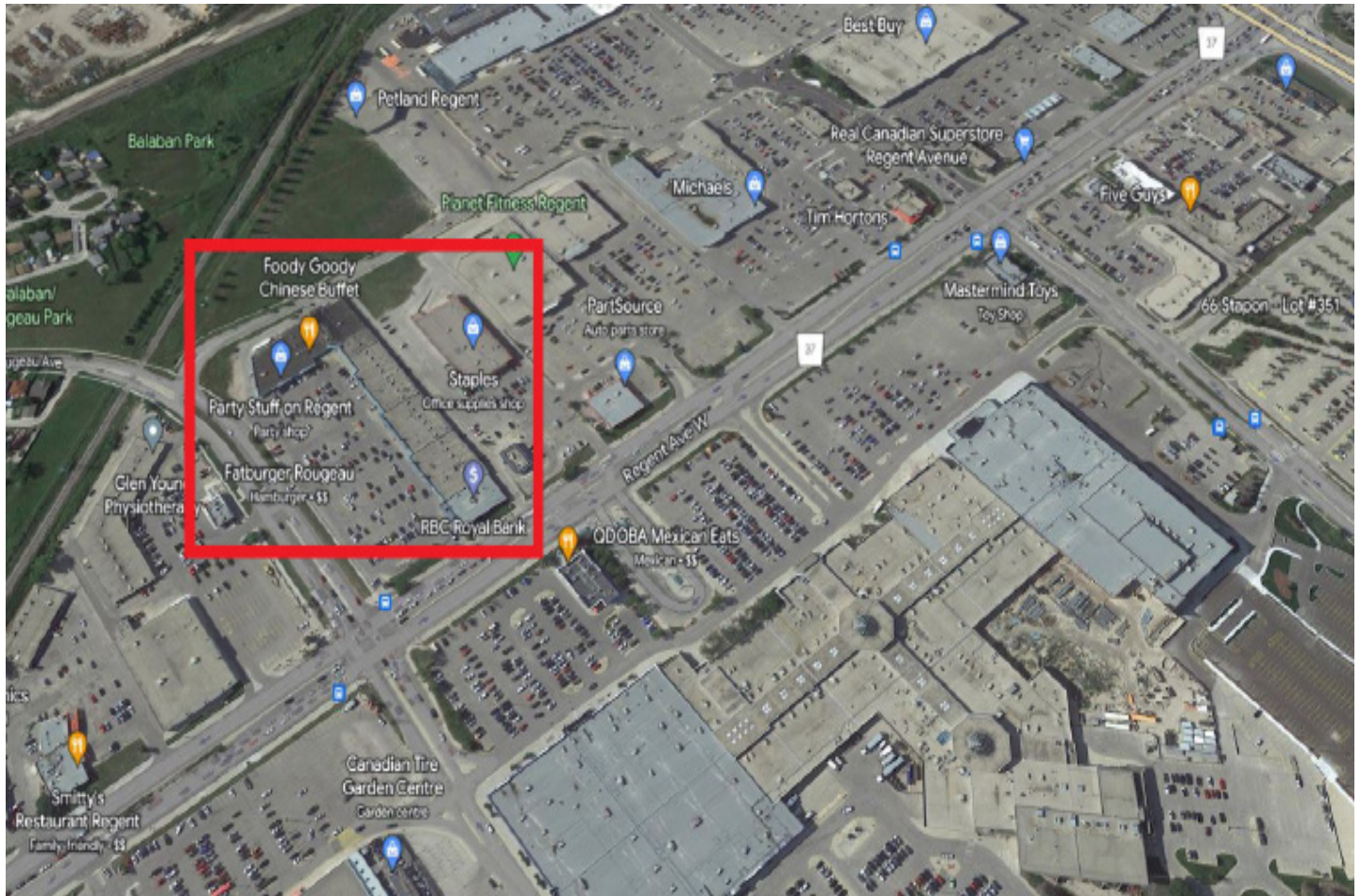
- 5-ton roof top HVAC unit
- 19'.10" lineal frontage
- Ample on-site parking
- Centrally located on main transit routes
- Professionally managed and maintained



## Floor Plan



# Aerial | 10-1530 REGENT AVE. WEST





ROYAL  
CANADIAN  
PROPERTIES

# Contact

---



Leasing inquiries:

**Craig Stoddart**

*Executive Vice President - Leasing & Property Management*

(204) 947-2835

[cstoddart@royalcan.com](mailto:cstoddart@royalcan.com)



Suite 800 - 240 Graham Avenue  
Winnipeg, MB R3C 0J7



(204) 947-2835