

For Lease



ROYAL
CANADIAN
PROPERTIES



30-1530 Regent Ave W.

Winnipeg, MB

Contact:
Craig Stoddart
(204) 947-2835

Retail - Office - Industrial

www.royalcan.com

Overview | 30-1350 Regent Ave. W



Description

Located at Regent and Rougeau across from Kildonan Place Shopping Centre

Address: 30 - 1530 Regent Avenue West

Zoning: C3

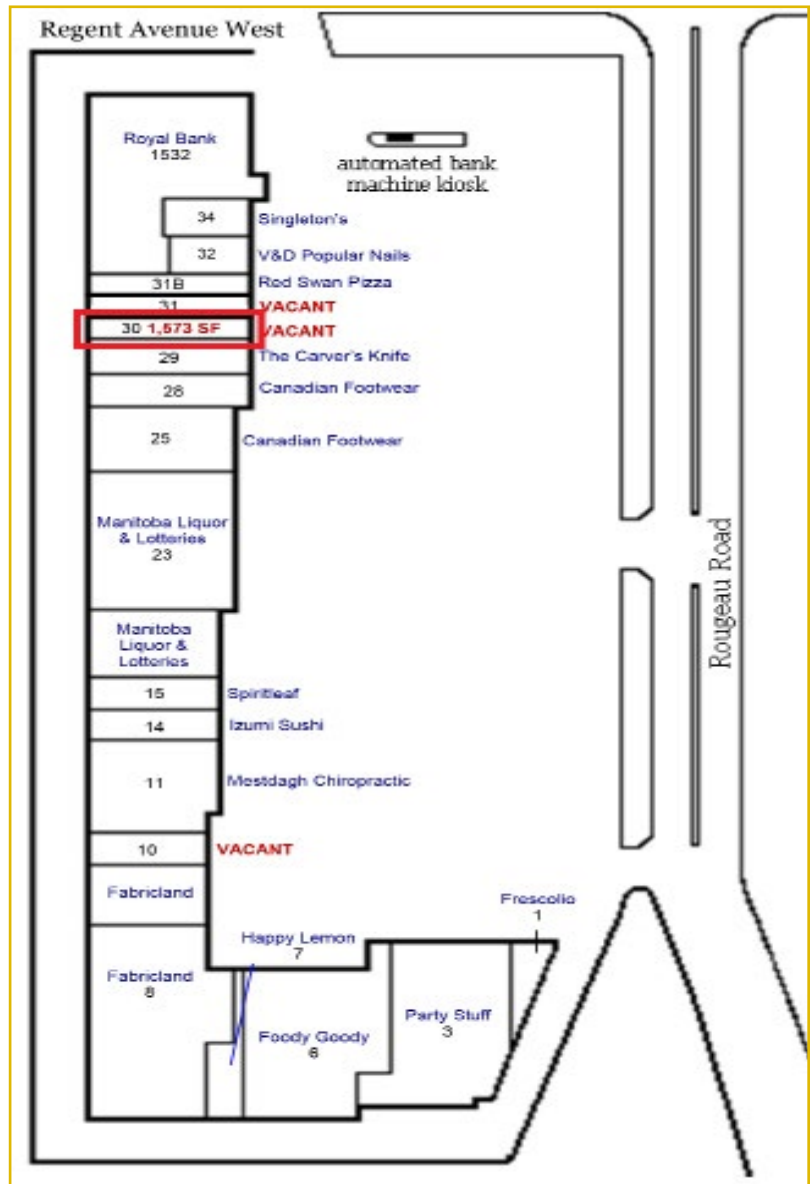
Rentable Area: 1,573 sq. ft.

Net Rent: \$25.00 /sf/annum

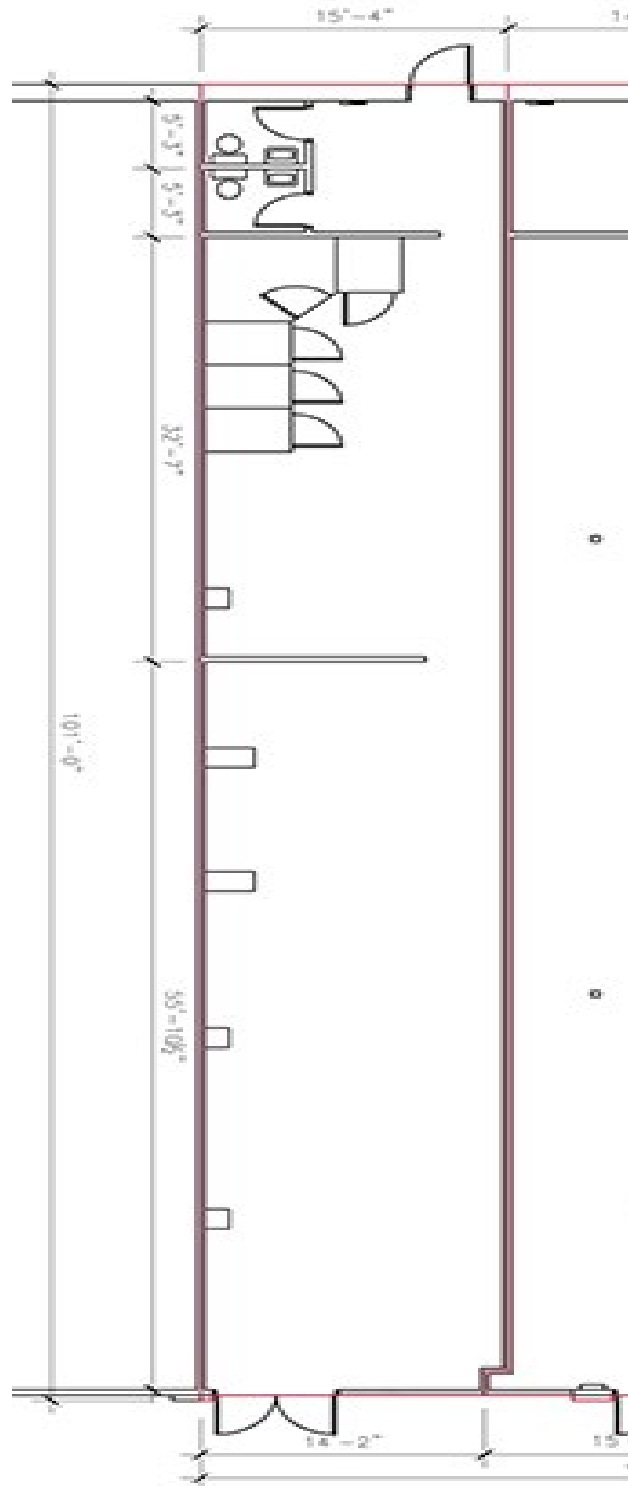
CAM/Tax: \$10.11 (est 2024) + Mgmt. Fee

Site Highlights

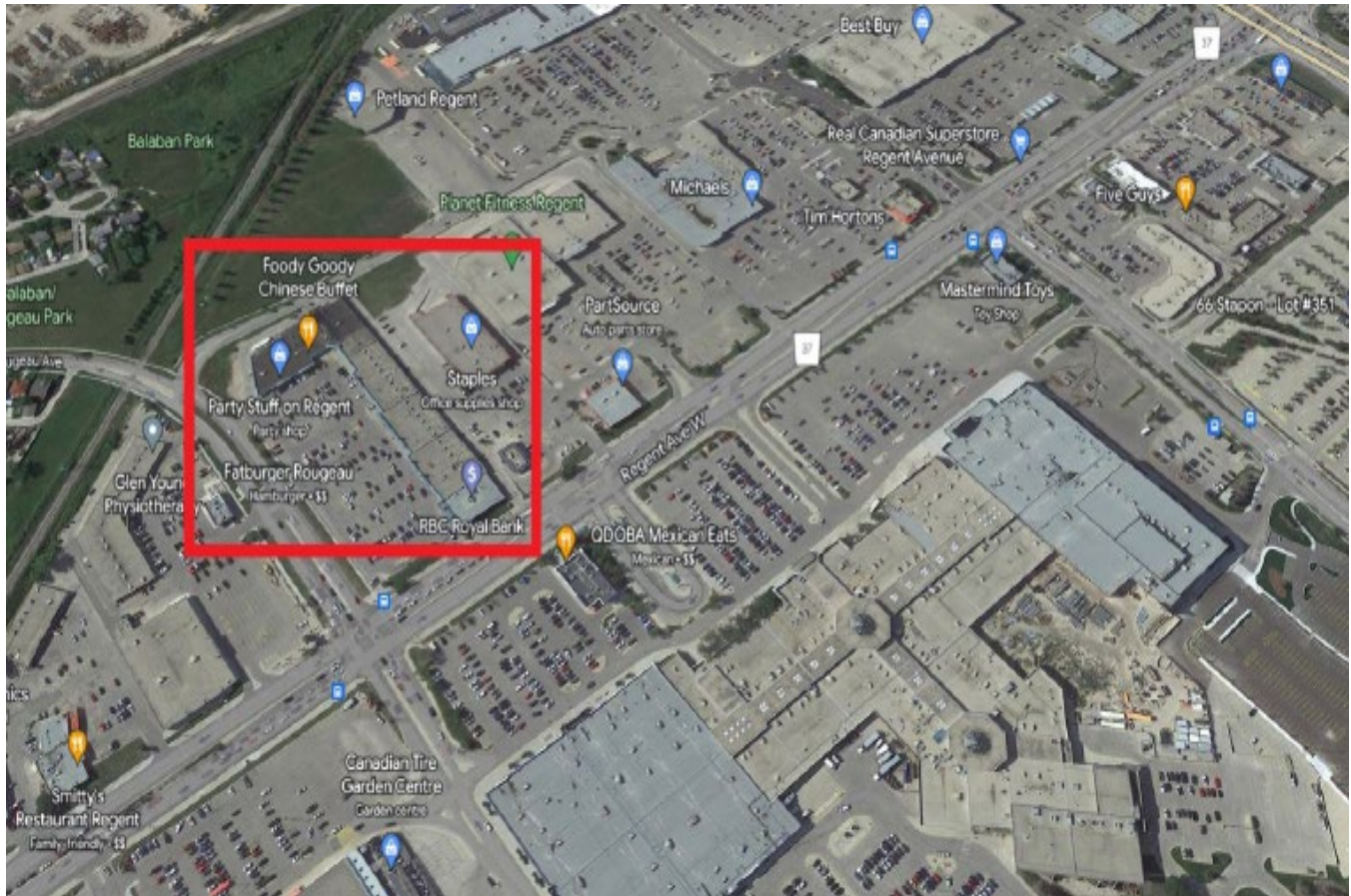
- 200 amp feed
- Ample on-site parking
- Centrally located on main transit routes
- Professionally managed and maintained
- Great mix of retail and professional tenants



Floor Plan



Aerial | 30-1530 Regent Ave. W





ROYAL
CANADIAN
PROPERTIES

Contact

 Leasing inquiries:


Craig Stoddart

Executive Vice President - Leasing & Property Management

(204) 947-2835

cstoddart@royalcan.com

 Suite 800 - 240 Graham Avenue
Winnipeg, MB R3C 0J7

 (204) 947-2835